

Power Stacker



Residual Capacity at different lifting height

Up to h3 mm	ACTUAL CAPACITY (Q) kg	
2700	1500	1100
3200	1100	900
3400	1000	800
3600	850	700
4000	700	550
Load centre distance (C) mm	600	700

1KG=2.2LB 1INCH=25.4MM

Handle Option

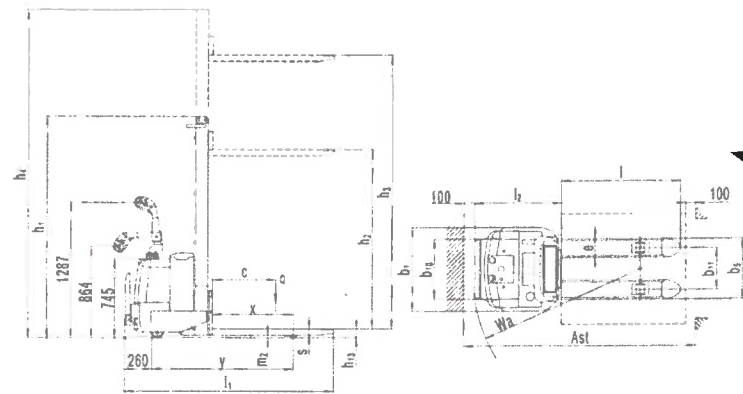


Canbus Handle



Noblelift Handle

Adjustable handle seat



- The hydraulic system is imported from Europe, it enhance the efficiency and safety.
- Smooth travel and lift with excellent controls reduces product damages and increases productivity.
- Lift limit switch operates at maximum lift height to shut off pump motor.
- A heavy-duty 24-volt electrical system provides good travel and lift speeds.
- High quality hydraulic pump assures very little noise, maximum efficiency and durability.
- Drive units is equipped an electromagnetic brake that is spring applied and electrically released. The brake is activated by the control handle position. The handle is ergonomically designed with a raise, lower and horn button.
- Speed automatically reduces when driving the fork at a height of 12" or higher.
- Built with a Germany ZF driving wheel . It has more power and allows it to work continuously for a much longer time.
- The CURTIS electronic controller helps provide plenty of low end torque while increasing the motor and battery life.
- Excellent stability in operation.



Quality creates

NOBLELIFT

ISO9001
ISO14001

1KG=2.2LB 1INCH=25.4MM

		CS1529	CS1529(FFL)	CS1532	CS1536(FFL)	CS1540	
Identification	1.2	Manufacturer's type designation		CS1529	CS1529(FFL)	CS1532	
	1.3	Drive:electric(battery or mains), diesel, petrol, fuel gas, manual		electric	electric	electric	
Weights	1.4	Type of operation :hand , pedestrian, standing, seated, order-picker		pedestrian	pedestrian	pedestrian	
	1.5	Load Capacity / rated load		Q(KG)	1500	1500	
Wheels, Chassis	1.6	Load centre distance		c(mm)	600	600	
	1.8	Load distance ,centre of drive axle to fork		x(mm)	765	765	
	1.9	Wheelbase		y(mm)	1367	1367	
	2.1	Service weight		kg	1025	1025	
	2.2	Axle loading ,laden front/rear		kg	1130/1395	1130/1395	
	2.3	Axle loading,unladen front/rear		kg	700/325	700/325	
	3.1	Tyres:solid rubber,superelastic,pneumatic, polyurethane		polyurethane	polyurethane	polyurethane	
	3.2	Tyre size,front			230×75	230×75	
	3.3	Tyre size,rear			80×70 ¹⁾	80×70 ¹⁾	
	3.4	Additional wheels(dimensions)			124×60	124×60	
	3.5	Wheels,number front/rear(x=driven wheels)			1x+2/4	1x+2/4	
	3.6	Track width,front		b ₀ (mm)	570	570	
	3.7	Track width,rear		b ₁ (mm)	395	395	
	Basic Dimensions	4.2	Lowered mast height		h ₁ (mm)	1950	1950
		4.3	Free lift		h ₂ (mm)	150	1430
4.4		Lift height		h ₃ (mm)	2815	3115	
4.5		Extended mast height		h ₄ (mm)	3370	3670	
4.9		Height of tiller in drive position min./max.		h ₅ (mm)	865/1287	864/1287	
4.15		Lowered height		h ₆ (mm)	85	85	
4.19		Overall length		l ₁ (mm)	2022	2022	
4.20		Length to face of forks		l ₂ (mm)	872	872	
4.21		Overall width		b ₁ (mm)	795	795	
4.22		Fork dimensions		s/e/l(mm)	60/180/1150	60/180/1150	
4.25		Width over forks		b ₂ (mm)	575	575	
4.32		Ground clearance,centre of wheelbase		m ₂ (mm)	25	25	
4.33		Aisle width for pallets 1000X1200 crossways		As ₁ (mm)	2324	2324	
4.34		Aisle width for pallets 800X1200 lengthways		As ₂ (mm)	2271	2271	
4.35		Turning radius		Wa(mm)	1680	1680	
E-Motor Performance Data	5.1	Travel speed,laden/unladen		km/h	5/5.5	5/5.5	
	5.2	Lift speed, laden/unladen		mm/s	82/152	82/152	
	5.3	Lowering speed,laden/unladen		mm/s	95/108	95/108	
	5.8	Max.gradient performance,laden/unladen		%	6/12	6/12	
	5.10	Service brake			electromagnetic	electromagnetic	
	6.1	Drive motor rating s2 60min		kw	1.5	1.5	
	6.2	Lift motor rating		kw	2.2	2.2	
	6.3	Battery acc.to BS,no			3VBS	3VBS	
6.4	Battery voltage,nominal capacity		V/Ah	24/210	24/210		
Others	8.1	Type of drive control			MOSFET Control	MOSFET Control	
	8.4	sound level at driver's ear acc.to EN 12053		dB(A)	67	67	

1)single wheel Φ80×93